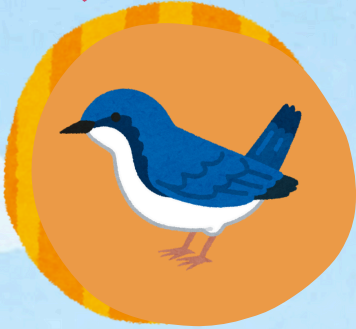


Bloom

A Sensory Adventure



"We fly!"



"We dance!"



"We help!"



"We discover!"



Book and Lyrics By
Danielle Koenig
music By
Danielle Koenig and Abbie Goldberg

Devised By
Danielle Koenig Abbie Goldberg
Irvin Mason Jr. Haleyann Hart
Elana Hershman

Bloom

A Sensory Adventure

1. Good Morning Song



2. Explore the Roots
with Ant



3. Explore the Trunk
with Squirrel



4. Explore the Branches
with Bee



5. Explore the Leaves
with Bird



1. Good Night Song



Bloom

A Sensory Adventure

Character Guide



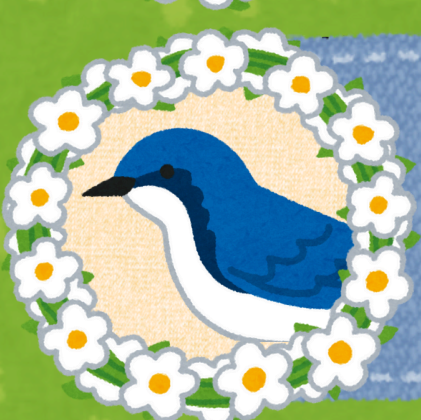
Ant may be small, but they are certainly mighty! Although they might bug out sometimes, inside their grumpy exoskeleton lies a heart of gold. They're always happy to help a friend and grateful to be helped in return.



Squirrel is furry, fun...and a bit forgetful. They go nuts for nuts, but sometimes they lose track of where they've put them. They're always ready to explore, and always excited to enjoy a snack after a big adventure!



Bee is a brainy little bug who loves to share fun facts with their friends. If they're feeling extra sweet, they might even share some of their delicious honey! They're constantly buzzing with excitement and curiosity about the world.



Bird has a big heart, and it's constantly aflutter with big feelings! They love to fly far wide, spreading wings and their positivity wherever they go. Bird also loves to sing, and nothing makes them smile more than singing with their friends.

Bloom

A Sensory Adventure

Creative Team

Danielle Koenig

Playwright, Lyricist, and Devising Artist

Danielle Koenig (they/them) is an award-winning queer, trans, disabled actor and writer with degrees from NYU's Graduate Musical Theatre Writing and UCLA's School of Theater, Film, and Television. Select recent acting projects include: *Maiden Voyage* (New Works Provincetown), *504: A New Musical* (Disabled Down Center, Musical Theater Factory), *Dance With Me* (Latiné Musical Theater Lab), *Strike/Out* (Kitchen Sink Theater Company), *Charlotte Lucas Is 27 & Not Dead* (Piper Theater), and more. As a writer, their musicals and standalone songs have been seen at Lincoln Center, Rattlestick Playwright's Theater, 54 Below, and more. They are currently commissioned by the Brooklyn Children's Theater and FUSE Theatre, and their musical *The Myth of the Mountain*, with music by Justin D. Cook, has been performed at UCLA, Syracuse University, and NYU, and was a 2023 and 2024 NMTC Semifinalist.

Abbie Goldberg

Composer, Designer, and Devising Artist

Abbie Goldberg (they/she) is a trans, disabled, Jewish multidisciplinary artist from the mountains of rural Maine. This year they were proud to participate in Broadway Advocacy Coalition's Theater of Change program and to co-produced *Feisty Disabled Artists*, a cabaret in honor of disability rights activist Judy Heumann. They are an alumnus of The New Opera and Musical Theater Initiative where they workshopped and performed their full length musical *Believing Cassandra*, the Join for Justice Community Organizing Fellowship, and New York University's Graduate Musical Theatre Writing program. Their work has been performed at Lincoln Center, Rattlestick Theater, Musical Theatre Factory, Salt Tree Eco Puppetry Festival, Rockwood Music Hall, as part of *Adding Our Voices: The Jewish Feminist Songbook and Gender Inclusion Initiative*, and more. Their writing has been published by *HowlRound*, *Autostraddle*, *Dame*, *Waif Magazine*, *The Theatre Times*, *Sinister Wisdom*, *AK Press* and others. They are also one of the cofounders of the Jewish drag troupe *Turmohel* with whom they perform under the name *Chava GoodTime*. They are passionate about using joy and spectacle as forces for social change.

Bloom

A Sensory Adventure

Creative Team

Irvin Mason Jr. Director and Devising Artist

Irvin Mason Jr. (he/him) Irvin is a director, actor, poet, and teaching artist born and raised in St. Thomas, US Virgin Islands. His work intersects expressive movement, live music, emerging technology, and Afro-Caribbean traditions to breathe new life to physical storytelling. Irvin seeks to direct work that leaves a residue — unapologetic work that dismantles the traditional foundations of theater, and creates space for new voices to tell their own stories. Irvin is currently a Drama League Stage Directing Fellow. His recent directing credits include: *Ain't Misbehavin* (Gallery-Players), *Stuck* (Chain Theatre), and *Pipeline* (Gallery-Players). Assistant Directing: *Gospel According to Heather* (AMAS, dir. Rachel Klein). In 2023, Irvin served as a directing observer to Schele Williams on the Broadway revival of *The Wiz*. He was the SDCF directing shadow on *Little Shop of Horrors* (dir. Maggie Burrows) and *Rent* (dir. Lili-Anne Brown) at the MUNY. He was also the directing observer on *Pup! A Chew Story* (NAMT).

Haleyann Hart Choreographer and Devising Artist

Haleyann Hart (she/her) is a choreographer, performer, and teaching artist who strives to create accessible and inclusive theatre and dance for all ages. Choreography credits include *A Tale of Two Cities* and *A Gentleman's Guide to Love and Murder* with Village Light Opera Group, *She Loves Me* at Stevens Institute, *Stuck at The Chain* (Audience Choice Award), *Little Shop of Horrors* with Color Box, and the premiere of the original musical *Camp Song* at UCLA. Haleyann is a ballet teacher with Tutu School Brooklyn and loves making magic with her young students! She also works for *Embody Dance Conference*— a convention and competition that offers mental health and mindset seminars as well as dance training to young dancers across the country. Haleyann has been with Fuse since 2020, after graduating Summa Cum Laude with her BA in Theater from UCLA where she met Elana, Irvin, and Dani. She is so grateful to be working with this team on such a special project!

Bloom

A Sensory Adventure

Creative Team

Elana Hershman

Producer and Devising Artist

Elana Hershman (she/her) is a performing artist and theater-maker from the San Francisco Bay Area, now living in New York City. She has a big spot in her heart for art and people and believes that theatre is an important tool for building bridges between communities and fostering empathy. She has an artistic home at Fuse Theatre, where she devises and produces issue-driven and community-centered art and events. She is also a teaching artist and has served a diverse range of students in a variety of settings, including school classrooms, summer conservatories, and online workshops. She is currently working with New York City students big and small through Broadway Bound Kids, Treasure Trunk Theatre, and the International Girls Ensemble. She is driven to create a safe and empowering space in the arts for creatives of all ages, and she carries her commitment to accessibility and social equity through all her work.



This play was proudly developed by
Fuse Theatre
through the
Ignite Artists Program

Fuse Theatre creates meaningful theatre experiences to connect communities, expand perspectives, and foster civic engagement. We believe our work is made stronger by the many voices, perspectives, and experiences we bring into our projects. Our work is founded in principles of justice, equity, and inclusion for all.